

- ❖ Home
- ❖ **Magnetic Assemblies**
 - Pot Magnet
 - Bar Magnet
 - Square Magnet
 - Horseshoe Magnet
 - Magnetic stand
 - Magnetic Chuck
 - Magnetic Sweepers
 - Pull-and-Push Magnetic Attractor
 - Magnetic door suction
 - Magnetic Separator
 - Lifting Magnets
- ❖ **Specification of Magnets**
- ❖ **Process Pieces**
- ❖ **Other Products**

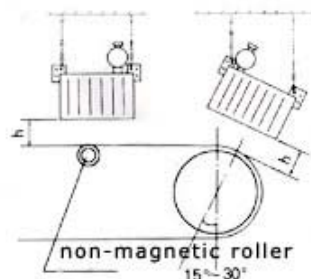
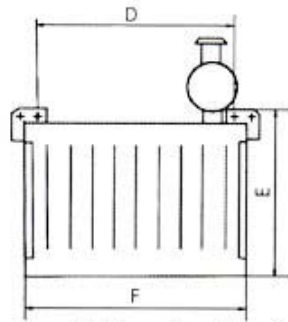
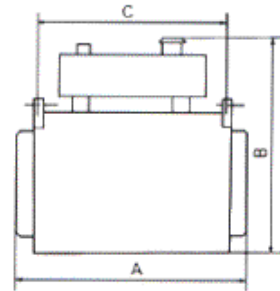
Magnetic Assemblies >> Magnetic Separator

Series PCDE Oil-cooling Electromagnetic Separator

Specification: Series PCD Electromagnetic Tramp Iron Separator

Product Introduction:

Absorbing the advanced technique for transformer and cooling system with the circulation of transformer oil, it features with whole sealed structure, high magnetic force, dust and rain protection, erosion-wearing and continuous work that can protect the equipment such as roller, crusher etc.



Overall Dimension Drawing

installation sketch map

Technical Parameters

Parameter Type	Item	Belt width adaptive mm	Suspension Height Rated Mm(H)	Magn etic intens ity ≥mT	Belt Spee d Adapt ive ≤m/s	Thickn ess ≤mm	Excitat ion power ≤kw	Weig ht kg	Outline dimension mm					
									A	B	C	D	E	F

PCDE-4	400	100	50	4.5	60	0.6	300	50 0	62 0	35 0	25 0	40 0	40 0
PCDE-5	500	150	60		100	1	500	67 0	76 0	48 0	30 0	47 5	50 0
PCDE-6	600	175	60		125	1.5	650	77 5	83 5	58 0	45 0	53 0	60 0
PCDE-6.5	650	200	70		150	2.0	750	79 5	85 5	59 0	44 0	55 0	65 0
PCDE-8	800	250	70		200	3	1150	10 50	98 0	77 0	62 0	67 0	83 5
PCDE-10	1000	300	70		250	4.5	1400	14 00	11 60	94 0	80 0	75 5	10 00
PCDE-12	1200	350	70		300	6	2780	14 60	11 90	12 60	10 70	73 0	12 90
PCDE-14	1400	400	70		350	8.5	4200	17 00	12 80	15 00	13 40	80 0	15 60
PCDE-16	1600	450	70		400	12.5	5700	19 50	13 70	18 50	16 30	86 0	18 50
PCDE-18	1800	500	70		450	18	7300	21 70	14 90	20 50	18 80	95 0	20 00
PCDE-20	2000	550	70		500	22	8500	24 00	16 60	22 50	21 80	11 10	21 00
PCDE-22	2200	600	70		550	27	10500	27 00	19 00	24 70	24 20	13 50	22 80

(For Reference Only)

[Back to Magnetic Separator List](#)

[Profile](#) | [Contact](#) | [Sitemap](#) | [Catalog](#)

©2006 YUXIANG Magnetic Materials Ind.Co.,Ltd.All Rights Reserved.