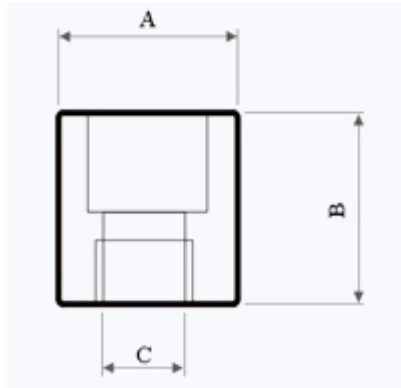


Item Code	POT				Magnet	Coated	Pull Force (N)
	Material	A	B	C			
POTN03-10	Fe37	10	10	M4	NdFeB	Ni	
POTN03-15	Fe37	15	15	M4	NdFeB	Cr	80
POTN03-19	Fe37	19	8	M5	NdFeB	Ni	135
POTN03-20	Fe37	20	15	M4	NdFeB	Cr	120
POTN03-20A	Fe37	20	10	M3	NdFeB	Ni	170
POTN03-28	Fe37	28	9.5	M6	NdFeB	Zn	250
POTN03-30	Fe37	30	10	M6	NdFeB	Ni	200
POTN03-30A	Fe37	30	25	M8	NdFeB	Ni	
POTN03-33	Fe37	33	22	M6	NdFeB	Cr	
POTN03-38	Fe37	38	10.5	M6	NdFeB	Zn	500
POTN03-40	Fe37	40	15	M6	NdFeB	Ni	500
POTN03-40A	Fe37	40	20	M6	NdFeB	Ni	500
POTN03-40B	Fe37	40	30	M8	NdFeB	Ni	
POTN03-45	Fe37	45	16	M8	NdFeB	Zn	450
POTN03-50	Fe37	50	40	M8	NdFeB	Ni	
POTS03-15	Fe37	15	15	M6	YXG26	Ni	
POTS03-22	Fe37	22	20	M6	YXG26	Ni	92
POTA03-08	Fe37	8	8	M3	ALNiCo	Zn	5
POTA03-9.5	Fe37	9.5	15	M3	ALNiCo	Zn	8
POTA03-9.5A	Fe37	9.5	15.8	M3	ALNiCo	Zn	8
POTA03-10	Fe37	10	10	M3	ALNiCo	Zn	8
POTA03-12	Fe37	12	16	M5	ALNiCo	Zn	15
POTA03-12A	Fe37	12	16	M5	ALNiCo	Red Paint	15
POTA03-12B	Fe37	12	17	M3	ALNiCo	Zn	10
POTA03-12C	Fe37	12	17	M4	ALNiCo	Zn	10
POTA03-12.7	Fe37	12.7	15.8	M4	ALNiCo	Zn	15
POTA03-12.7A	Fe37	12.7	15.8	M5	ALNiCo	Red Paint	15
POTA03-16	Fe37	16	20	M4	ALNiCo	Zn	18

Item Code	POT				Magnet	Coated	Pull Force (N)
	Material	A	B	C			
POTA03-17	Fe37	17	20	M4	ALNiCo	Zn	18
POTA03-17.5	Fe37	17.5	15.8	M6	ALNiCo	Zn	25
POTA03-17.5A	Fe37	17.5	16	M6	ALNiCo	Red Paint	25
POTA03-17.5B	Fe37	17.5	16	M6	ALNiCo	Zn	
POTA03-20	Fe37	20	24	M4	ALNiCo	Zn	42
POTA03-20A	Fe37	20	24	M6	ALNiCo	Zn	42
POTA03-20B	Fe37	20	16.2	M4	ALNiCo	Gr	
POTA03-20C	Fe37	20	24	M6	ALNiCo	Zn	
POTA03-20.6	Fe37	20.6	19	M6	ALNiCo	Zn	40
POTA03-20.6A	Fe37	20.6	19	M6	ALNiCo	Red Paint	40
POTA03-24	Fe37	24	30	M5	ALNiCo	Zn	80
POTA03-25.4	Fe37	25.4	21	M10	ALNiCo	Zn	100
POTA03-27	Fe37	27	25.4	M6	ALNiCo	Zn	60
POTA03-27A	Fe37	27	25.4	M6	ALNiCo	Red Paint	60
POTA03-27B	Fe37	27	25.4	M6	ALNiCo	Red Paint	
POTA03-27C	Fe37	27	25.4	10-32	ALNiCo	Red Paint	
POTA03-32	Fe37	32	40	M8	ALNiCo	Zn	180
POTA03-35	Fe37	35	30	M8	ALNiCo	Zn	150
POTA03-35A	Fe37	35	30	M8	ALNiCo	Zn	150
POTA03-35B	Fe37	35	20	M6	ALNiCo	Zn	180
POTA03-35C	Fe37	35	20	M6	ALNiCo	Red Paint	180
POTA03-35D	Fe37	35	42	M6	ALNiCo	Zn	200
POTA03-35E	Fe37	35	42	M10	ALNiCo	Zn	200
POTA03-35F	Fe37	35	30.1	M6	ALNiCo	Zn	180
POTA03-45	Fe37	45	30	M8	ALNiCo	Zn	250
POTA03-45A	Fe37	45	30	M8	ALNiCo	Red Paint	250
POTA03-45B	Fe37	45	44	M10	ALNiCo	Zn	240
POTA03-45C	Fe37	45	25	M6	ALNiCo	Red Paint	180
POTA03-45D	Fe37	45	44	M8	ALNiCo	Zn	240
POTA03-50	Fe37	50	40	M8	ALNiCo	Zn	250
POTA03-50A	Fe37	50	40	M8	ALNiCo	Red Paint	250



Item Code	POT				Magnet	coating	Pull Force(N)
	Material	A	B	C			
POTN03B-06	Fe37	6	6	M3	NdFeB	Cr	10
POTN03B-08	Fe37	8	6	M3	NdFeB	Cr	20
POTN03B-10	Fe37	10	18	M4	NdFeB	Cr	35
POTN03B-12	Fe37	12	8	M4	NdFeB	Cr	35
POTN03B-15	Fe37	15	18	M5	NdFeB	Cr	80
POTN03B-19	Fe37	19	8	M4	NdFeB	Cr	120
POTN03B-20	Fe37	20	18	M6	NdFeB	Cr	120
POTN03B-29	Fe37	29	10	M5	NdFeB	Cr	350

[Back](#)